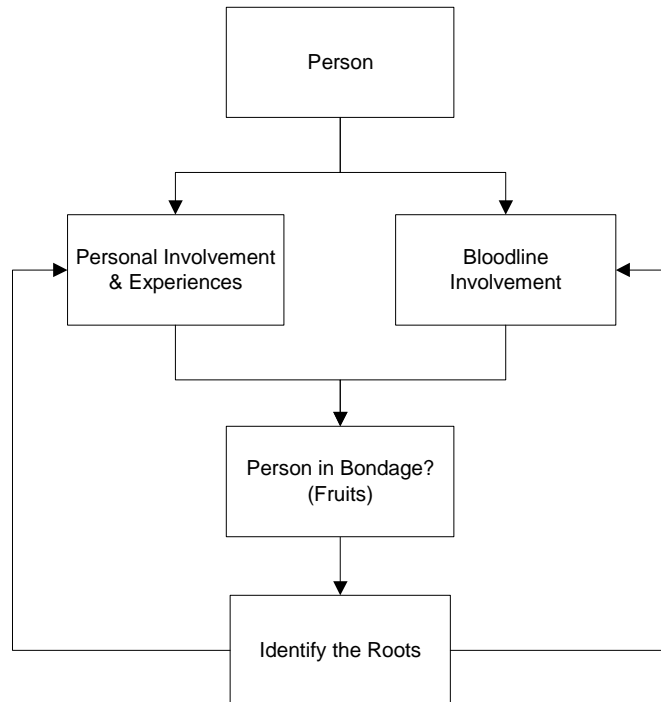


Overview of Bloodlines



A person in a holistic view is formed by two major streams (one building onto the other): the first is his bloodline (the time before he is born) and adding to that his personal involvements and experiences. A person consists of at least two bloodlines – one from the mother's side and one from the father's side. These two bloodlines can originate from the same country, but many times these bloodlines themselves consists of multiple countries of origin as people intermarry. More often than not, a family tree is necessary to identifying the different countries of origin. Looking from a counselling point of view - either one of these streams can create bondage in a person's life. Yet today, counsellors only look at the personal involvements and experiences when trying to identify the root of a problem. However many cases exists today where the root of a problem can not be traced to a personal involvement or experience and a person then has to learn to live with the bondage causing a generation that is dysfunctional.

This website presents that the problem causing bondage in a person's life may lie in the bloodlines. We refer to this as possible tendencies in the bloodline. Studies have shown that a person will produce who he is. Thus alcoholics will produce alcoholics. Another example: Susan's great-granddad was known to be stubborn, rude and emotionless. Her granddad had the same character traits and would you know so did her dad. No one could explain this tendency and everyone just accepted it. However, what the people did not know was that great-granddad was molested and abuse by his own father on a regular basis and in order to cope with this situation he developed these characteristics to protect himself but in the process passed it on to the children creating unknowingly a tendency in the bloodline. This is just one example. It is commonly known that the German bloodline is ruthless and cold hearted, a tendency this bloodline carries due to the way they treated the Jews. Thus, feelings, emotions, habits, additions etc. can be transferred or passed on to the children (descendants) by the way they are brought up or by

what they are exposed to. This means that you can create a weak and sick bloodline carrying unexplainable tendencies including sicknesses and illnesses. The questions now remain: What influences a person? To what extent does a person get influenced? What methods are used to influence a person to the extent that bondages are formed? If a person is influenced, it will result in a family being influenced, and that in turn will result in the bloodline being influenced. If these influences create bondage on a person or family, that bondage will be carried forward in the bloodline to the next generation if it is not resolved or corrected.

In earlier years families were big, consisting of at least three to four generations living in the same house. The family units were close and family members carried concern regarding each other. Stories were told and carried from generation to generation and a multitude of information existed regarding the bloodlines. In today's times this type of bloodline information is rare as families are small, in many instances broken up. Many children today do not know what family ties mean, leaving a generation that doesn't know where it is coming from and has no direction for the future, carrying heaps of unanswered questions and bondages.

A dysfunctional generation can experience the following symptoms or indicators of psychological dysfunction:

- Mood – depression, sadness, irritability, anger, resentment, without humour, emotionless, aloofness.
- Self-esteem – self pity, uncertain, fear, self blame and self hatred, non-assertiveness, no will power, no ambition, lethargically.
- Communication – impoliteness, argumentative, opinionated, confrontational, cursor.
- Identity – egocentric (no recognition of essence beyond the ego), fragmented.
- Body posture – sloppy, tense, careless of the body.
- Relationships – conflict in close relationships, inability to love or to be loved, judgemental, isolated, unapproachable, greedy, overly competitive, demanding, violent, impatient, insensitive, critical, and unsympathetic.

However these symptoms or indicators unfortunately only appear when the problem has progressed to such a stage that serious damage has already been done. Often this is a “too late” stage. Treating only the symptoms could result in wasted effort and time, as one needs to find the root of the problem. The root of this problem can only be traced back to one of the two streams (bloodlines) mentioned. For example most of the South African countries of origin lie in Western Europe. A common understanding of Western Europe includes the following parts:

- the Nordic countries (Iceland, Norway, Sweden, Denmark and Finland), also known as Scandinavia
- the British Isles (United Kingdom – England, Wales, Scotland - and Ireland)
- the Benelux countries (Belgium, the Netherlands, Luxembourg)
- Germany
- France and Monaco
- the Alpine countries (Switzerland, Liechtenstein, Austria)
- the Apennine peninsula (Italy, San Marino, Vatican City)
- the Iberian peninsula (Spain, Andorra, Portugal)

In order to study a country's origin and potential influence on a person you need to look at the following:

➤ Timeline

It is of utmost importance to have an overall view and understanding of the history of a country: it's involvements in events and the reasoning behind it, and understanding how the country was formed.

➤ People of Importance

A country is made up of the cultural groups residing in it. The people make the bloodline and therefore cross breeds are important to take note of. Individuals with high influence levels will be highlighted to show the extent of the exposure to certain believes.

➤ Occultic Involvement

Involvement in the occult can have serious repercussions in an individual's life depending of the level of involvement - many books and many testimonies of people are proof of this. One example is where a individual can be the fourth generation Satanist in his family - having no choice or doesn't know any better.

➤ Secret Societies

Secret societies always contain many forms of occultic practices and it is in the academic sense an occultic practice. However due to the intensity of the occultic involvement it will be mentioned under its own heading. Only secret societies that have been exposed will be mentioned. It is a given that every country will have its secret societies; if it was well-known it would not be a secret society.

➤ Beliefs: Mythology and Religious Involvement

Mythology undoubtedly reveals systems of belief and explanation. A given myth may become just as much part of one belief system as part of another. A person's beliefs will influence to a certain level his involvements - the kind and the intensity of involvement.

➤ Traumatic Historical Events

Any traumatic event influences a person to some extent. More so when death is involved. The family will bear to some extend the pain with the individual and it might even be carried over generations.

➤ Megalithic sites

A circle, built of timber or stone, sometimes with surrounding earthwork ditches, seems to involve ideas on defining special, ritual spaces and of excluding some people from the ceremonies within. Evidences of mythological deities come from archaeology. The main archaeological finds were swords and other weapons, cups and cauldrons, pins, etc. Some of the more interesting evidences are statuettes of the people's gods or goddesses.

References

Sociology, Study Guide. Commonwealth Training Consultants.